

SEQUOIA UNION HIGH SCHOOL  
DISTRICT  
PROPOSED ATTENDANCE  
BOUNDARIES  
SCHOOL YEAR 2015-2016

BOARD OF TRUSTEES  
MEETING OF JANUARY 15, 2014

**SEQUOIA UNION HIGH SCHOOL DISTRICT  
ENROLLMENT FORECAST  
SCHOOL YEAR 2020-2021**

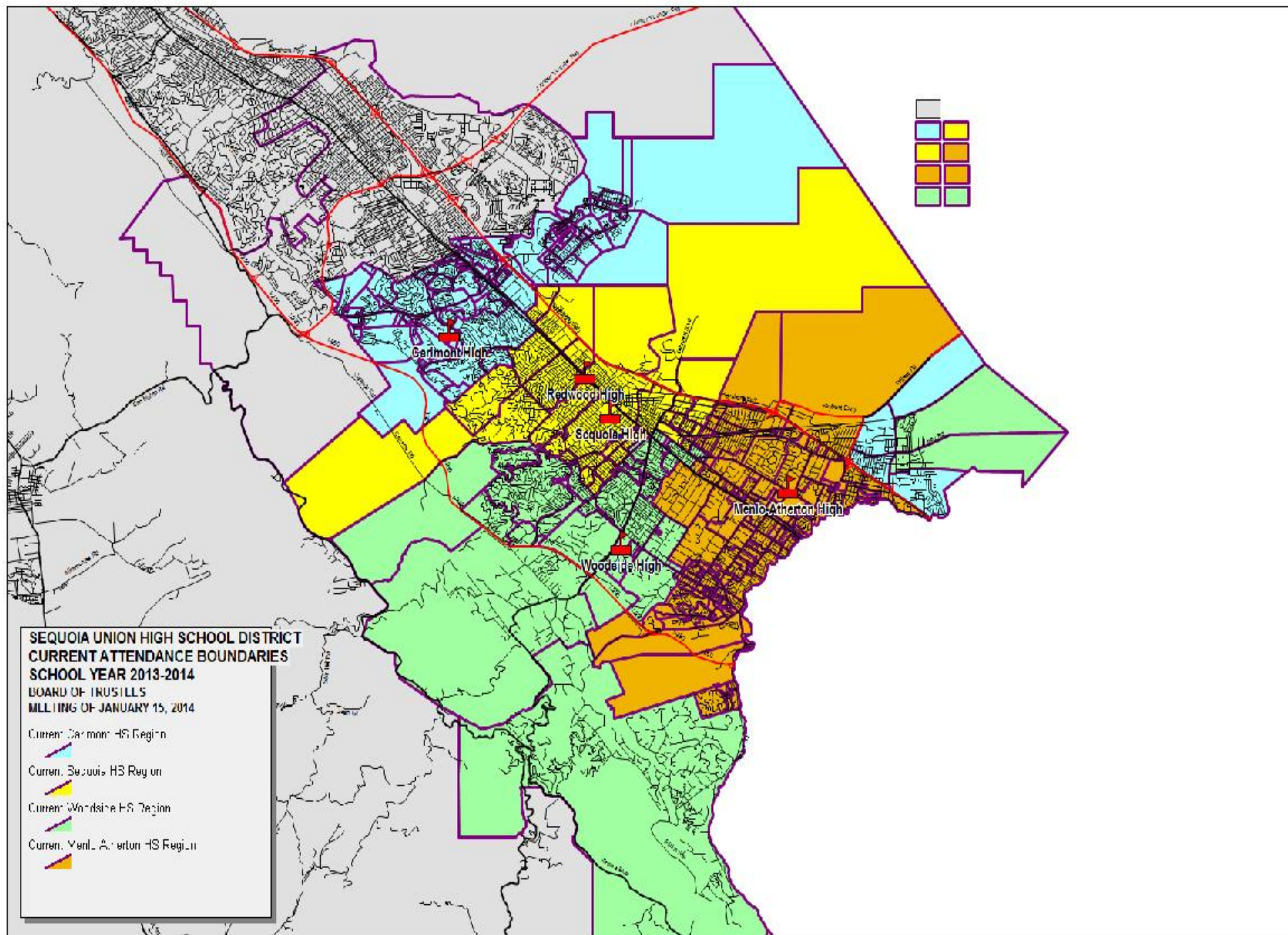
<b>COMPREHENSIVE HIGH SCHOOL</b>	<b>FY 20-21</b>
Carlmont High School	2,414
Menlo-Atherton High School	2,643
Sequoia High School	2,332
Woodside High School	2,021
<b>COMPREHENSIVE HIGH SCHOOL TOTAL</b>	<b>9,410</b>

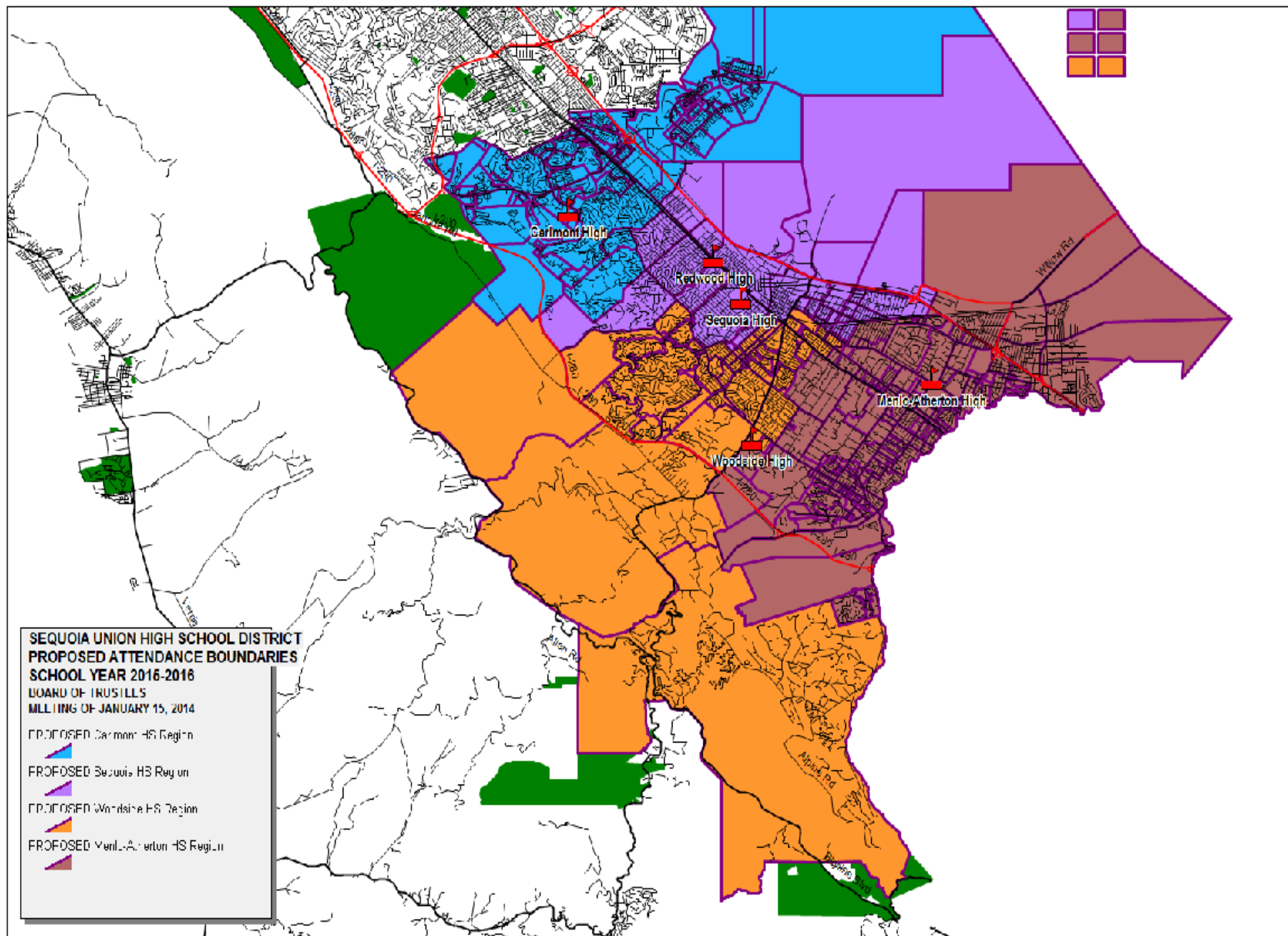
Alternative Programs 586

**DISTRICT TOTAL 9,996**

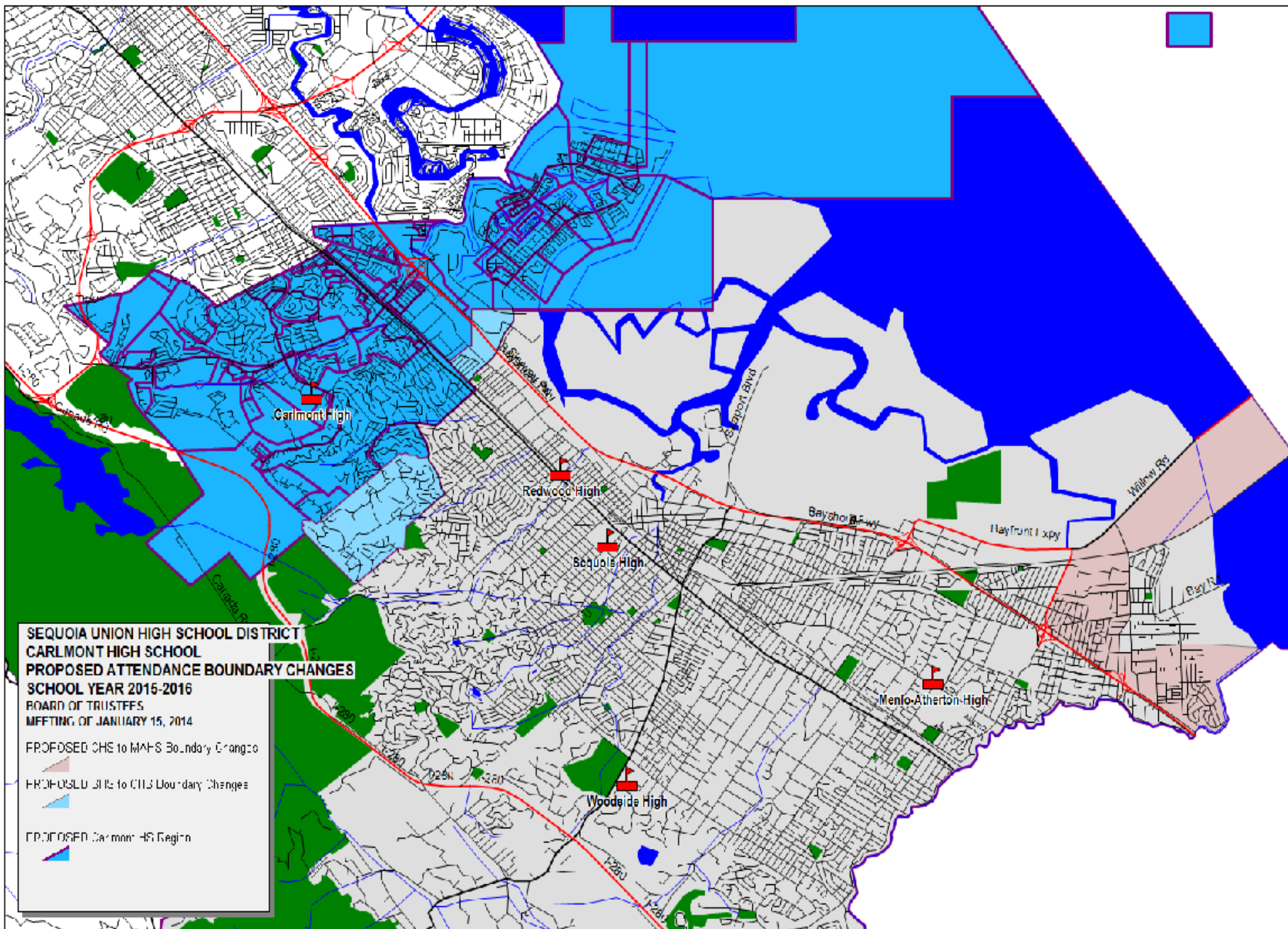
***Assumptions***

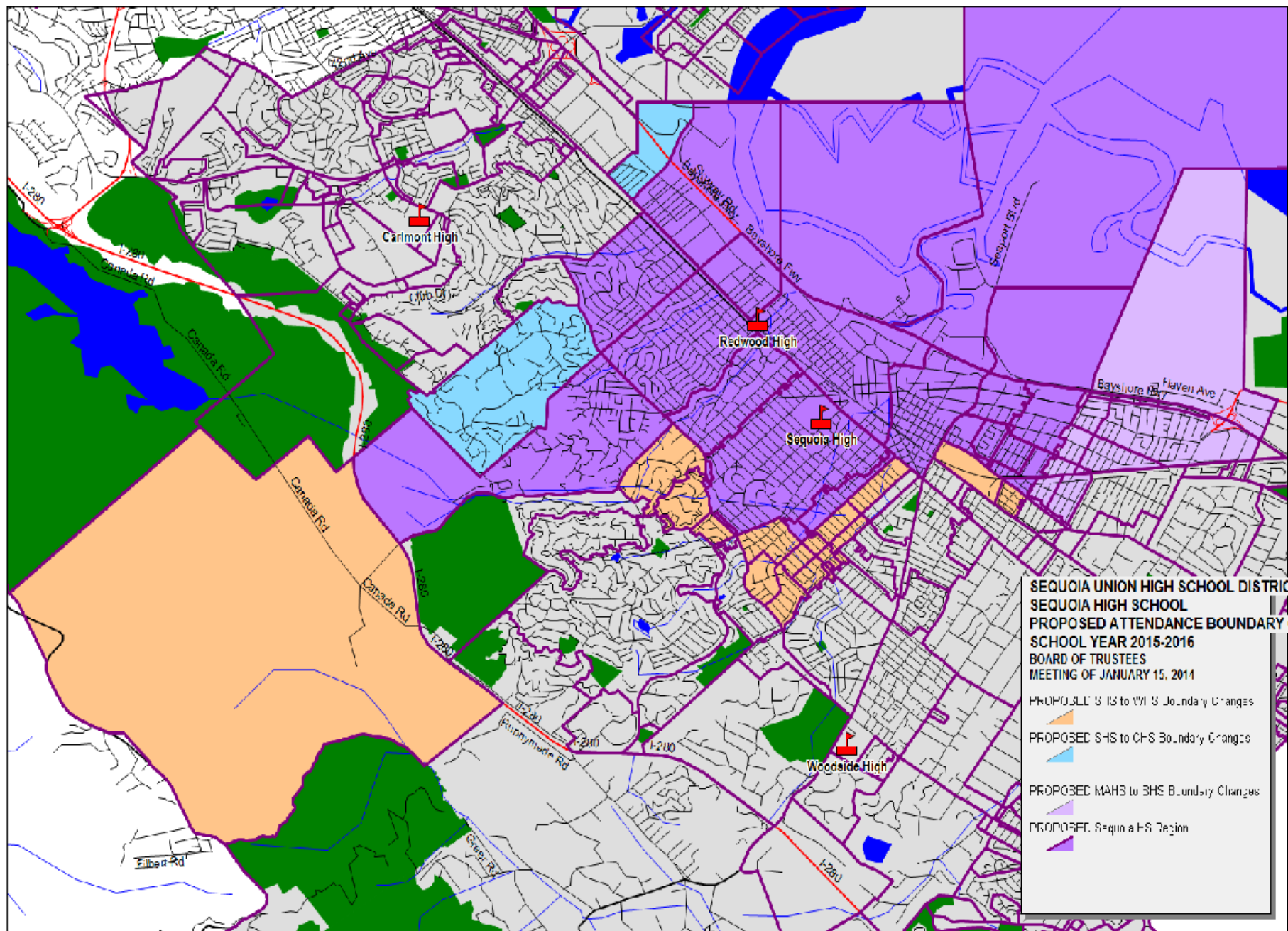
- *excludes future small schools*
- *alternative programs will continue at their current enrollment levels*
- *assumes that students attend home school and it does not include transfers due to open enrollment*
- *it does not include potential enrollment growth due to new housing developments*



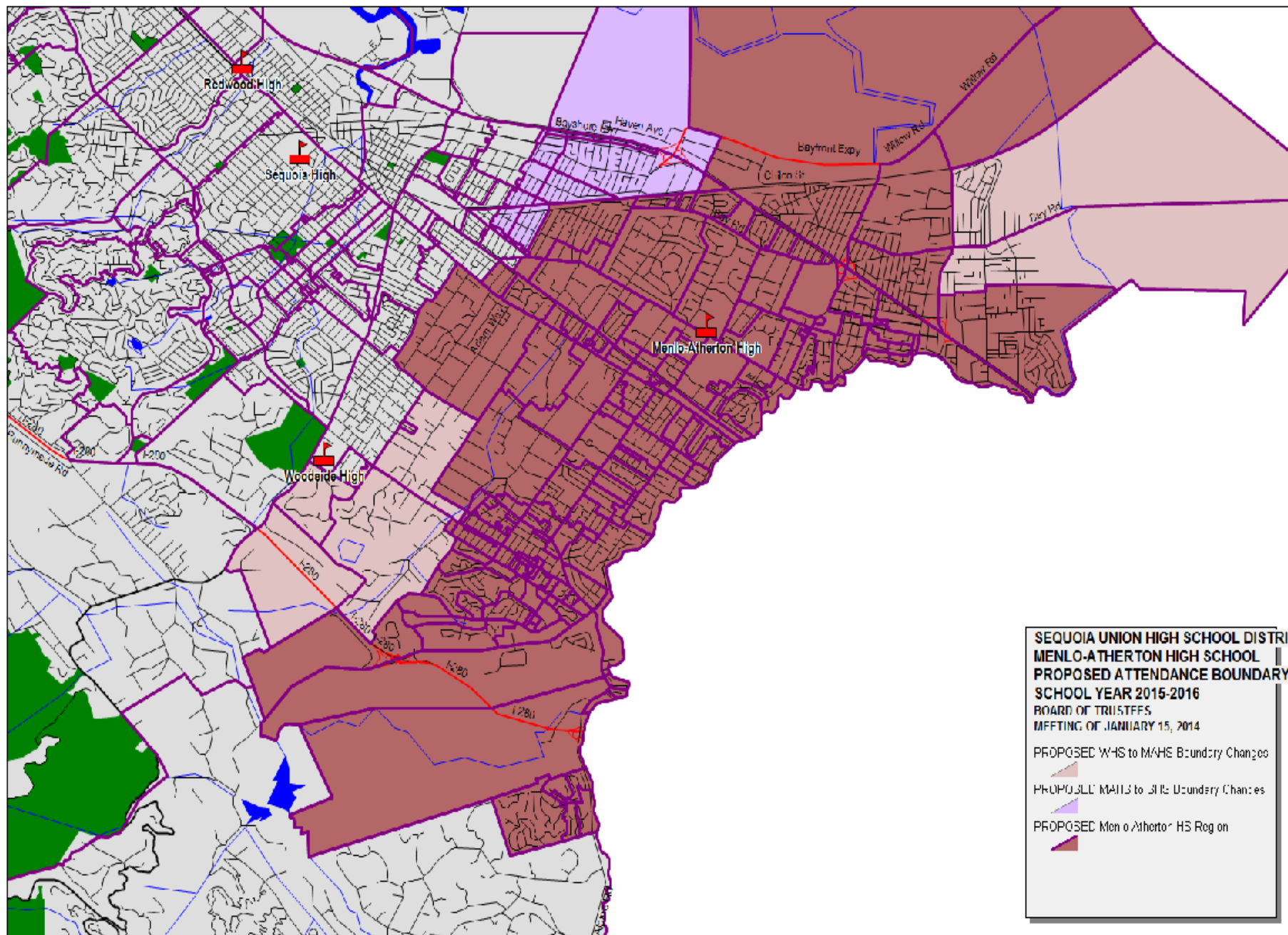












**SEQUOIA UNION HIGH SCHOOL DISTRICT  
MENLO-ATHERTON HIGH SCHOOL  
PROPOSED ATTENDANCE BOUNDARY  
SCHOOL YEAR 2015-2016  
BOARD OF TRUSTEES  
MEETING OF JANUARY 15, 2014**

PROPOSED W-HS to MAHS Boundary Changes

PROPOSED ALL MHS to JHS Boundary Changes

PROPOSED Menlo-Atherton HS Region

